

Stemmingen

vijf blokfluitkwartetten
voor sopraan-, alt-, tenor- en basblokfluit

1. vreugde
2. verdriet
3. troost
4. hoop
5. moed

basblokfluit



Vijf blokfluitkwartetten

(2015)

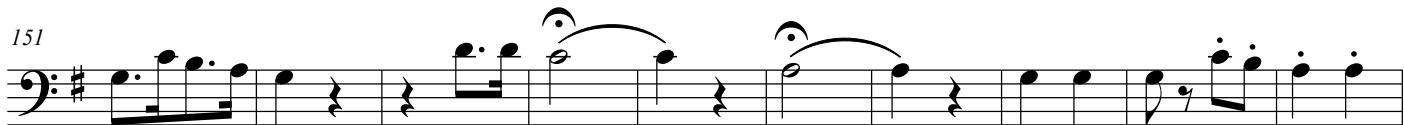
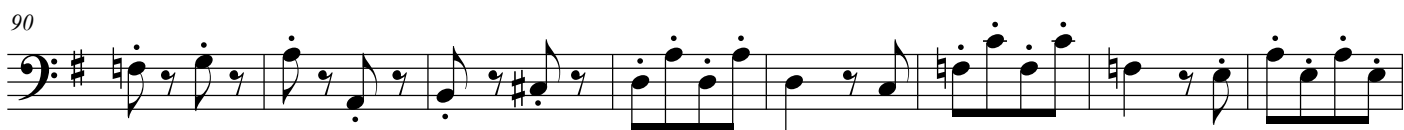
basblokfluit

1. vreugde

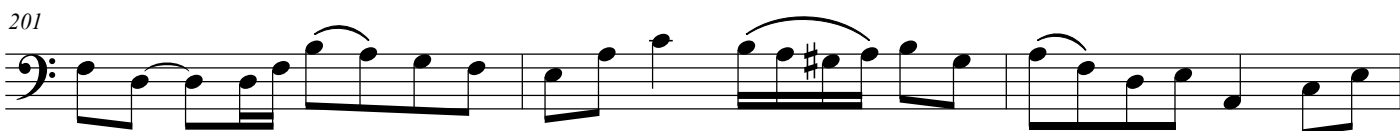
Henk Tromp
(1935 - 2022)

Allegro





2. verdriet

169 **Adagio** ♩ = 68-70

3. troost

212 Andante ($\text{♩} = 80$)

218



226



233



240



247



253



259



266



273



281



288

rit. **Lento**



4. hoop

Allegro Moderato (♩ = 100)

294

300

306

311

316

321

329

335

339

343



347



352



358



5. moed

362



366



370



375



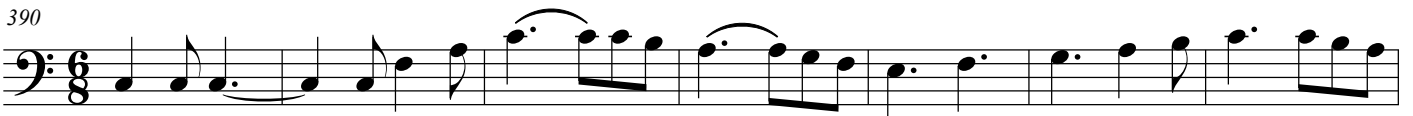
380



385



390



397



408



415

Musical staff for measure 415 in bass clef. It begins with a treble clef and a key signature of one sharp (F#). The notes are G2, A2, B2, C3, D3, E3, F#3, G3. A 4/4 time signature appears at the start of the second measure, followed by a quarter rest, two eighth notes (F#4, G4), and a quarter note (E4). The piece concludes with two whole notes (C3, G2) and a quarter rest.

421

Musical staff for measure 421 in bass clef. The notes are G2, A2, B2, C3, D3, E3, F#3, G3. The piece concludes with two whole notes (C3, G2) and a quarter rest.

426

Musical staff for measure 426 in bass clef. It begins with a treble clef and a key signature of one sharp (F#). The notes are G2, A2, B2, C3, D3, E3, F#3, G3. The piece concludes with a whole note (C3), a quarter rest, and a whole note (G2).

431

Musical staff for measure 431 in bass clef. The notes are G2, A2, B2, C3, D3, E3, F#3, G3. The piece concludes with a whole note (C3), a quarter rest, and a whole note (G2).

436

Musical staff for measure 436 in bass clef. It begins with a treble clef and a key signature of one sharp (F#). The notes are G2, A2, B2, C3, D3, E3, F#3, G3. The piece concludes with a whole note (C3), a quarter rest, and a whole note (G2).

441

Musical staff for measure 441 in bass clef. It begins with a treble clef and a key signature of one sharp (F#). The notes are G2, A2, B2, C3, D3, E3, F#3, G3. The piece concludes with a whole note (C3), a quarter rest, and a whole note (G2).

445

Musical staff for measure 445 in bass clef. It begins with a treble clef and a key signature of one sharp (F#). The notes are G2, A2, B2, C3, D3, E3, F#3, G3. The piece concludes with a whole note (C3), a quarter rest, and a whole note (G2).